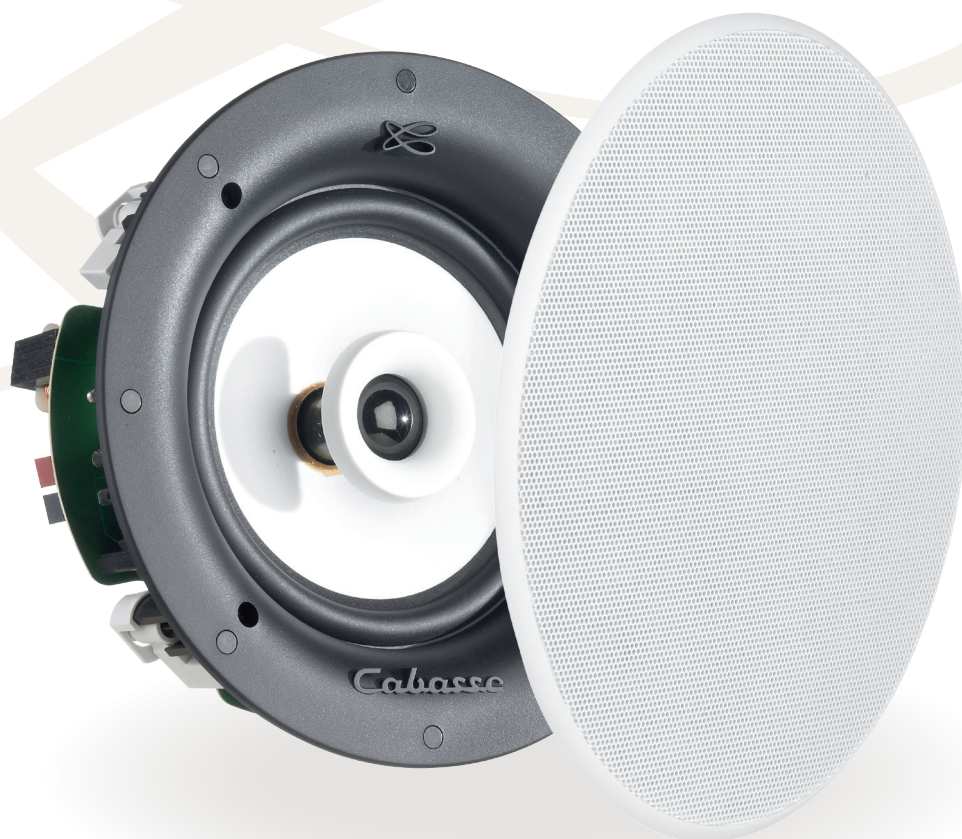


ARCHIPEL 17ICD



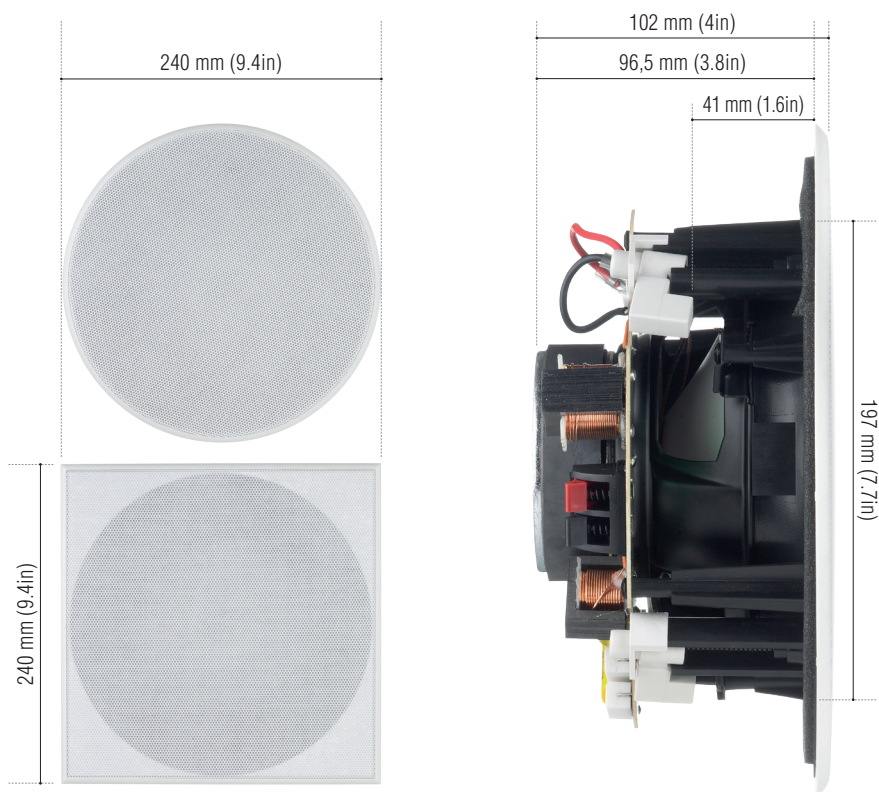
ARCHIPEL 17ICD

ARCHIPEL 17ICD

The Archipel range of loudspeakers is designed for perfect integration in ceilings and walls, with no performance compromises. Developed with the same passion that goes into the technical and acoustic design of all Cabasse loudspeakers, the range offers the same presence, high fidelity sound reproduction and user benefits that are to be found in all the company's products.

Behind its flush grille, either round or square, the ARCHIPEL 17ICD hides a high-end co-axial unit with a Duocell membrane for the woofer and a Kaladex semi-rigid dome for the tweeter. This combination of Cabasse proprietary solutions, responsible for the success of the iO2 satellite, is now available in a full range in-ceiling speaker.

Cabasse



Use	in ceiling / in wall
Ways	2
Drivers	<ul style="list-style-type: none"> ■ 1 x DOM25 pivoting tweeter Kaladex® dome ■ 1 x 17M20 IC midrange-woofer Duocell diaphragm
Cross-over point	2,600 Hz
Frequency response	58 Hz - 22,000 Hz
Sensitivity 1 W / 1 m	89.5 dB
Nominal impedance	8 ohms
Minimum Impedance	7.2 ohms
Power handling	40 W
Peak power	320 W
Dimensions (H x W x D)	24 x 24 x 10.2 cm - 9.4 x 9.4 x 4 in
Weight	1.6 kg - 3.5 lbs
Standard finish	white (paintable grill)

Cabasse

Cabasse SA - 210, rue René Descartes - BP 10 - 29280 Plouzané - France

Tel +33 (0)2 98 05 88 88 - Fax +33 (0)2 98 05 88 99

www.cabasse.com